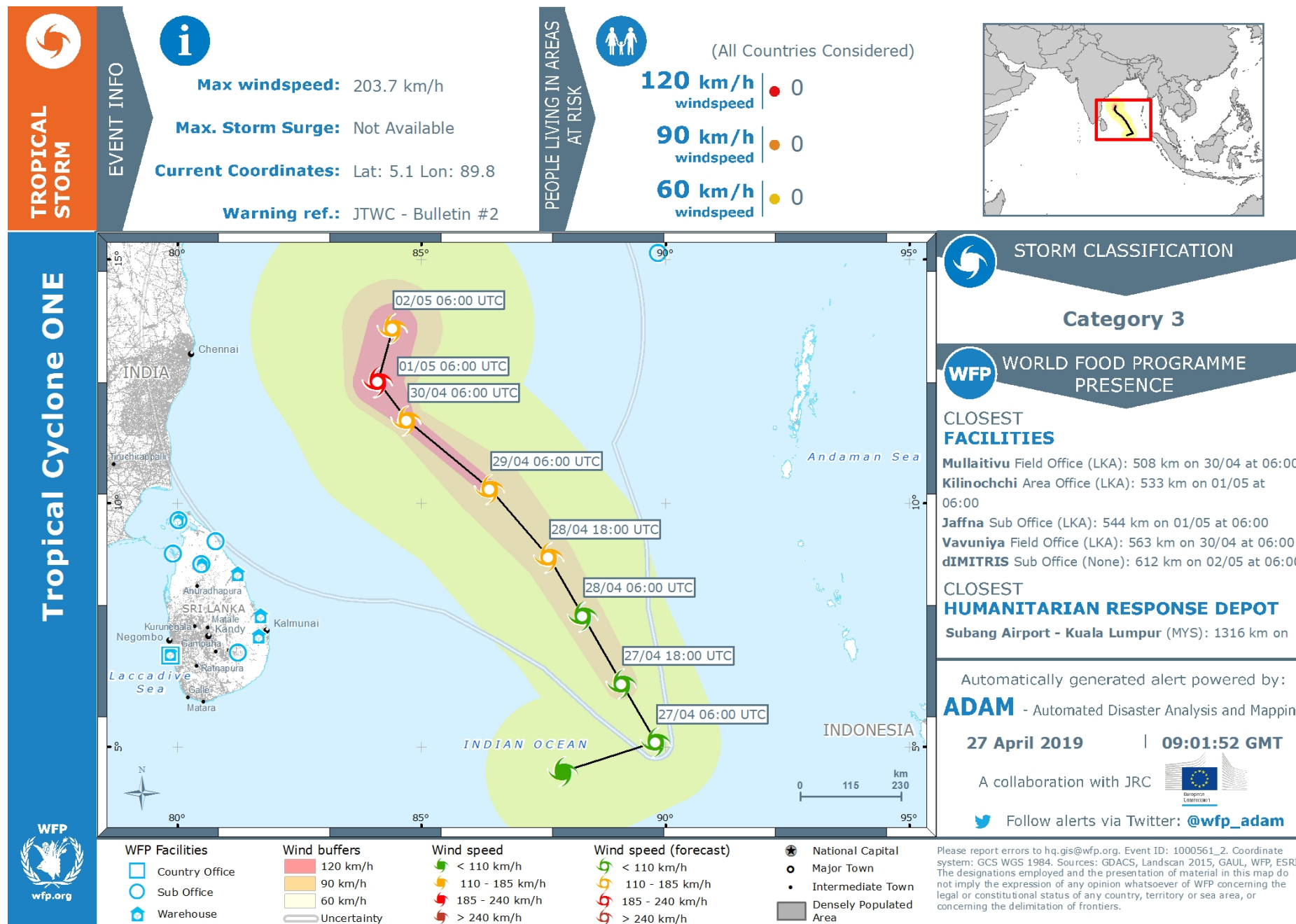


Cyclone Fani (2019)

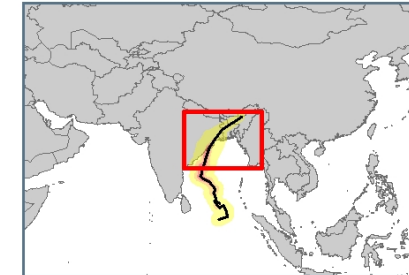
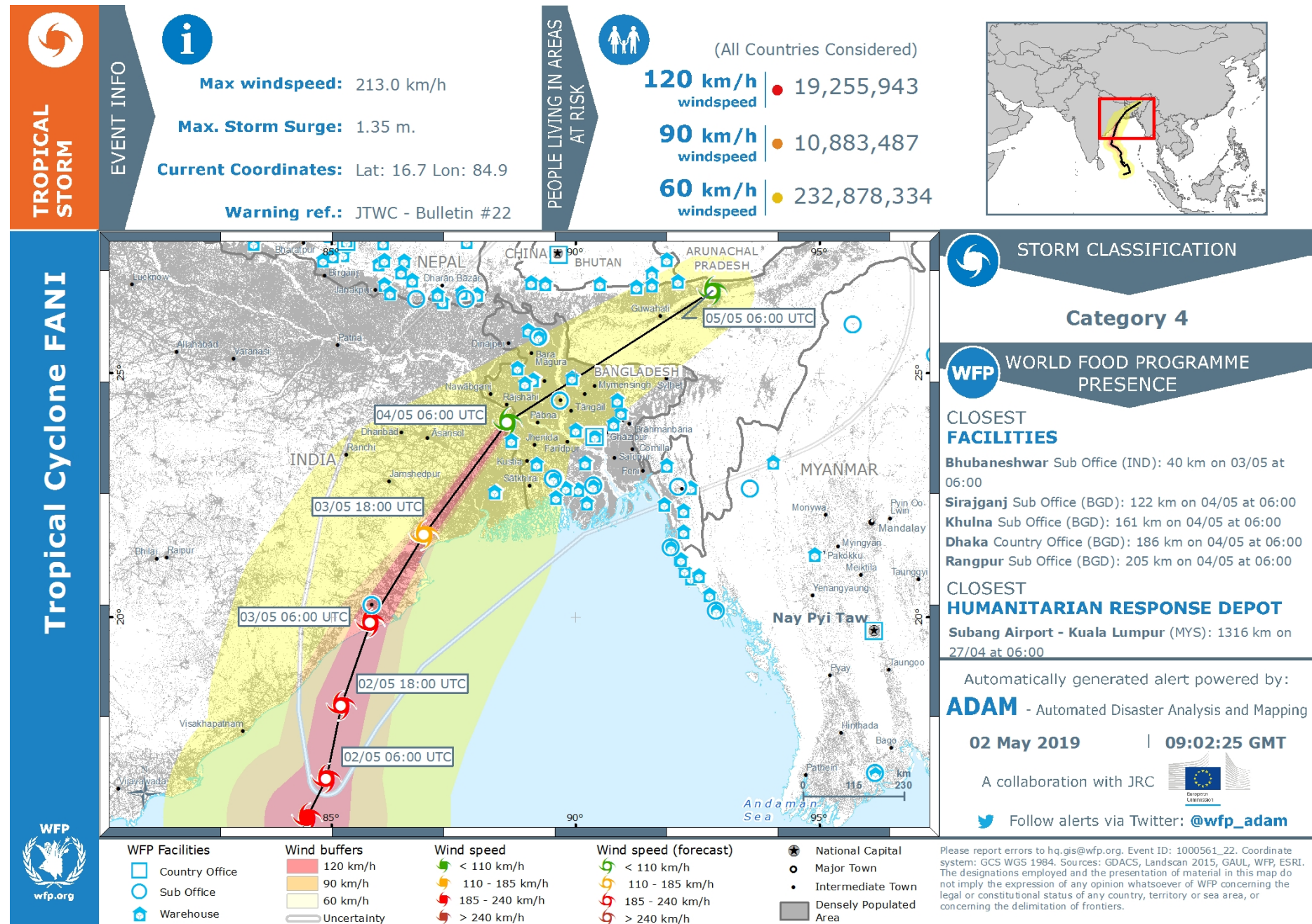
# **DME assessment**

## **Resource booklet**

# Source A



# Source B



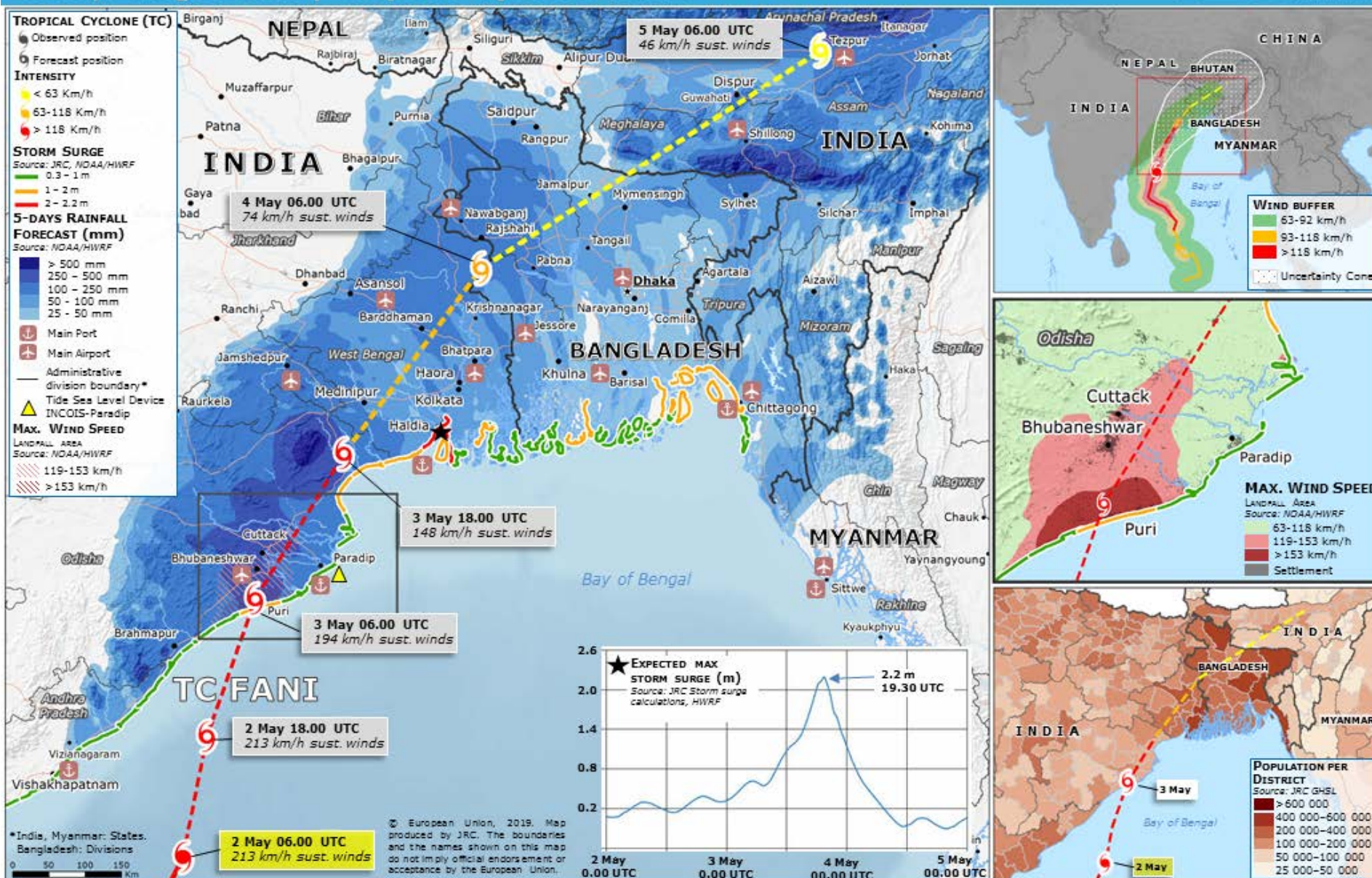
Please report errors to [hq.gis@wfp.org](mailto:hq.gis@wfp.org). Event ID: 1000561\_22. Coordinate system: GCS WGS 1984. Sources: GDACS, Landsat 2015, GAUL, WFP, ESRI. The designations employed and the presentation of material in this map do not imply the expression of any opinion whatsoever of WFP concerning the legal or constitutional status of any country, territory or sea area, or concerning the delimitation of frontiers.



# Source C

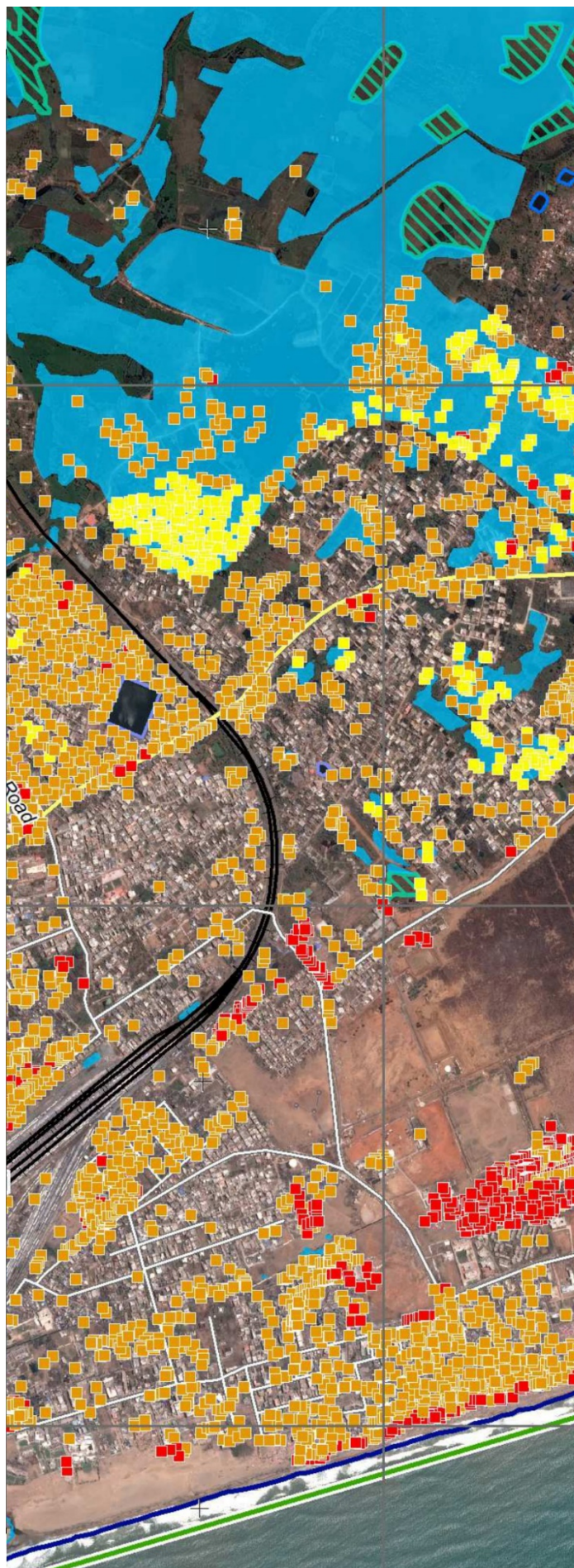
Emergency Response Coordination Centre (ERCC) – DG ECHO Daily Map | 02/05/2019

## India, Bangladesh | Tropical Cyclone FANI





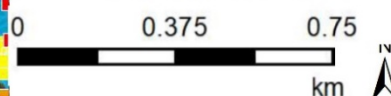
# Source D



## Puri - INDIA Storm - Situation as of 06/05/2019



### Cartographic Information



### Legend

### Crisis Information

Flooded Area  
(06/05/2019 04:59 UTC)

Flood trace

### Built Up Grading

- Destroyed
- Damaged
- Possibly damaged

### Transportation Grading

- Road, Damaged
- Road, Possibly damaged

Consequences within the AOI					
	Unit of measurement	Destroyed	Damaged	Possibly damaged	Total affected AOI
Flooded area	ha				731.6
Flood trace	ha				181.6
Estimated population	Number of inhabitants				NA 1,027,180
Settlements					
Residential	No.	1329	7747	691	9767
Other non residential	No.	1	1	2	4
Traffic and communication	No.	0	3	0	3
Change buildings	No.	3	0	0	3
Transportation					
Primary Road	km	0.0	2.1	0.0	2.1
Secondary Road	km	0.0	1.6	0.0	1.6
Local Road	km	0.0	7.3	1.1	8.4
Coast Track	km	0.0	0.0	0.0	0.0
Long-distance railway	km	0.0	0.0	0.0	0.0

### Map Information

This map shows damage grade assessment of a section of Puri (India). Damage assessments have been created with post-cyclone satellite images by manual human interpretation.

The smallest features visible are 2.5m in size.

The cyclone hit 03/05/18 at 0600.

This image was taken 06/05/19 0459

This map was produced 08/05/19

© European Union  
For full Copyright notice visit <http://emergency.copernicus.eu/mapping/ems/cite-copernicus-ems-mapping-portal>

**Copernicus**  
Europe's eyes on Earth

