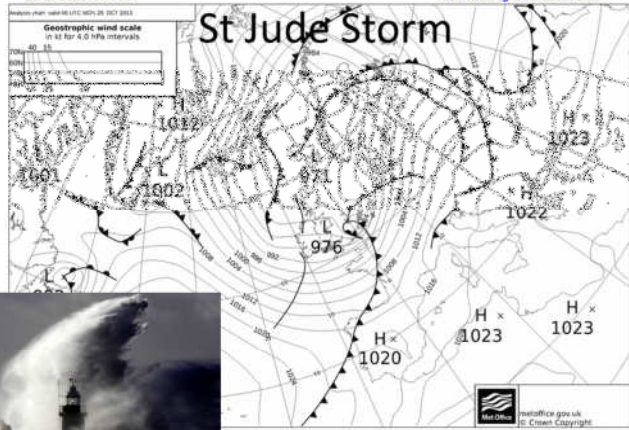


28th October 2013

28-10-2013 06 UTC

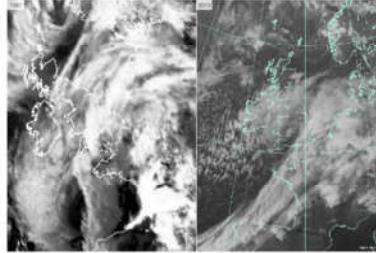
Archived by www.wetter3.de

St Jude Storm



RMetS

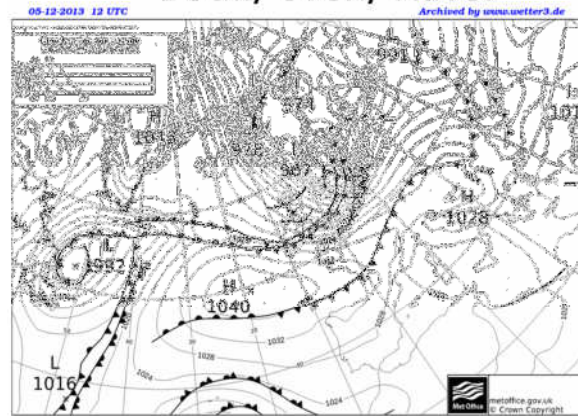
1987 v. St Jude



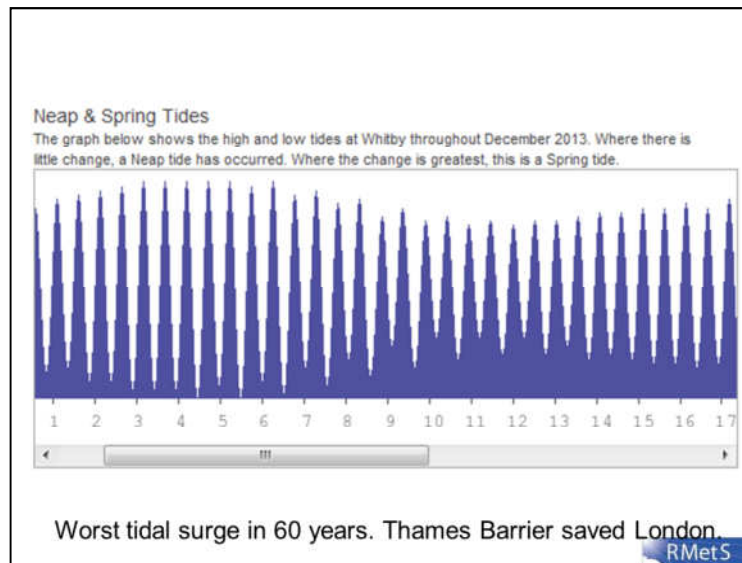
- Top gust speed 115mph, west ussex
- Forecasters got it wrong
- Top gust speed 99mph, Isle of Wight
- Forecasters got it right!

RMetS

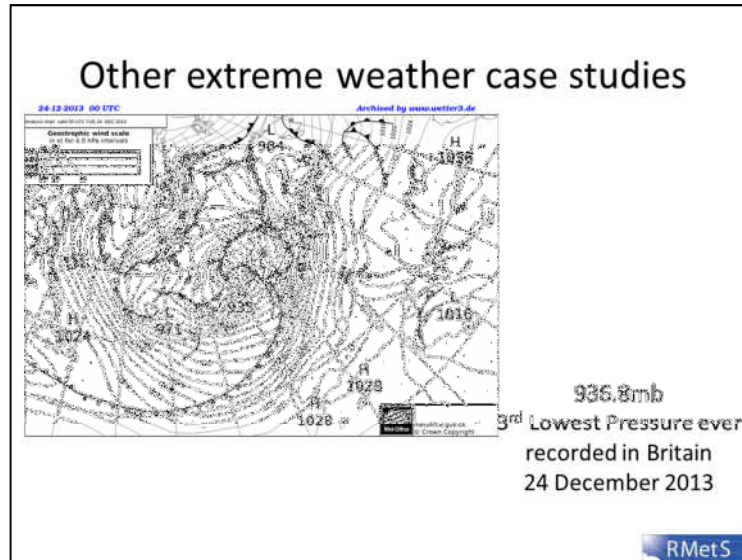
5th December 2013 Storm Bodil/ Sven/ Xaver



Low pressure + wind+ spring tide
Cyclone Bodil/ Sven/ Xaver



When pressure falls by one millibar, sea level rises by one centimetre



An intense extra-tropical North Atlantic storm passed over northern Scotland on December 24th causing the pressure to fall to 936.8 mb (27.66") at Stronoway around 1 p.m. local time Christmas Eve Day. This was the 3rd lowest pressure ever observed at a land site in the British Isles (next to a 927 mb/27.37" reading at Belfast, Ireland on December 8, 1886 and 925.6 mb/27.33" at Ochertyre, near Crieff in central Scotland on 26 January 1884).

What about the Jet Stream?

- A belt of westerlies in the upper troposphere, with wind speeds up to 200mph

- It is found where the poleward surface temperature gradient is strongest.

- This location is also favoured for the formation and intensification of depressions.



- Depressions on average follow the same path as the jet stream – the 'storm track'.
- The developing depression interacts with the jet.

Winter 2013/ 2014

Winter so far

- SOUTHERN ENGLAND
One of wettest in nearly 250 years
- SCOTLAND
Wettest December in over 100 years

RMetS

Jet stream further south and stronger – because the North/ South temperature contrast on the ground is stronger