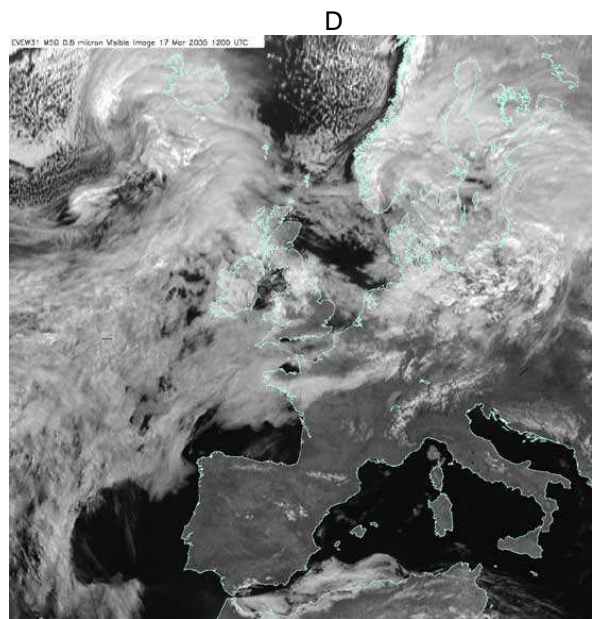
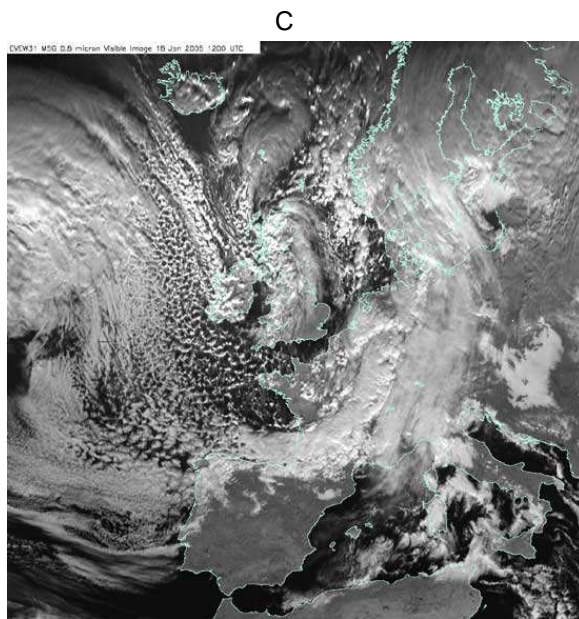
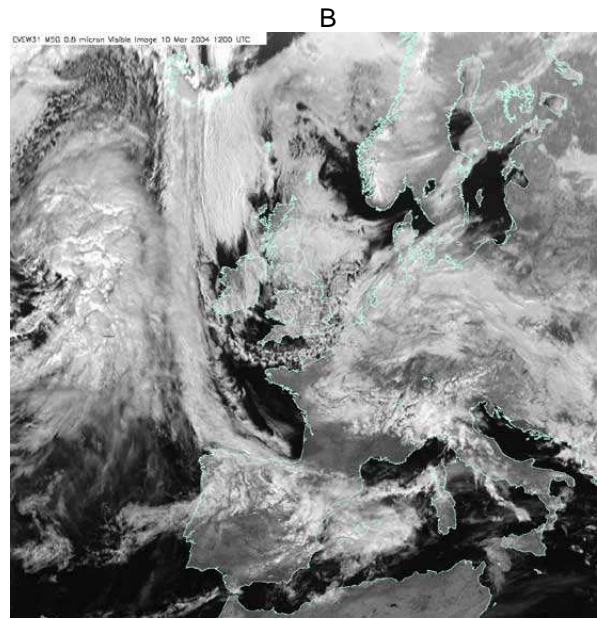
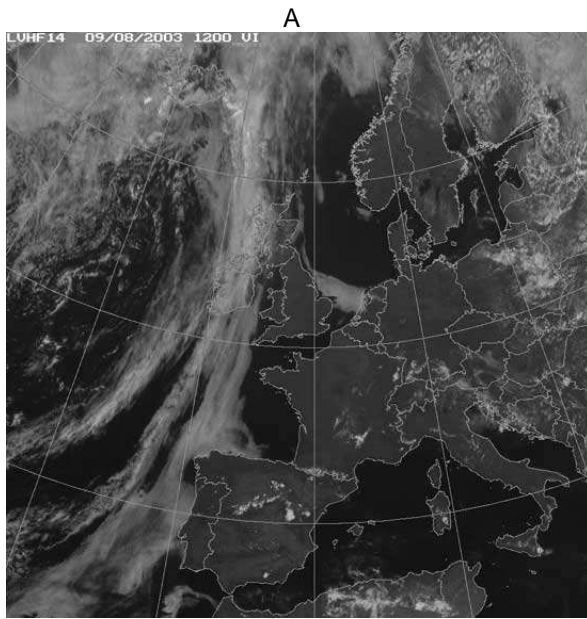


Which satellite image displays which air mass?



(answers

A = tropical continental, clear skies everywhere in this very dry air, with just isolated thunderstorms

B = polar continental, look for the clear belt of cloud off the west coast of Scandinavia, with cloud increasing as the air crosses the North sea, picking up moisture

C = polar maritime, look for the speckly convective cloud over the ocean and the thick cloud on the west coast of the UK

D – tropical maritime – cloud forms as the air moves north and cools forming flat sheets of cloud. There is no convection as the air is being cooled rather than warmed from below)