



Fort William Observatory



**Angus Rankin at entrance to
tower**



Digging out after heavy snow



Observatory in deep snow



**View across cliff to observatory –
note snow cornices**



Observatory in summer



R T Omond,
first superintendent, at door of Fort William Observatory



Alexander Buchan,
Secretary of the Scottish Meteorological Society



Ben Nevis from Corpach



Route of pony track



Observatory ruins now



**Angus Rankin, R T Omond
and R C Mossman, observers**



David Milne Home,
Chairman of the Council of the Scottish Meteorological
Society, who proposed setting up an observatory in 1877



**Wragge's cage containing his
thermometer screen**



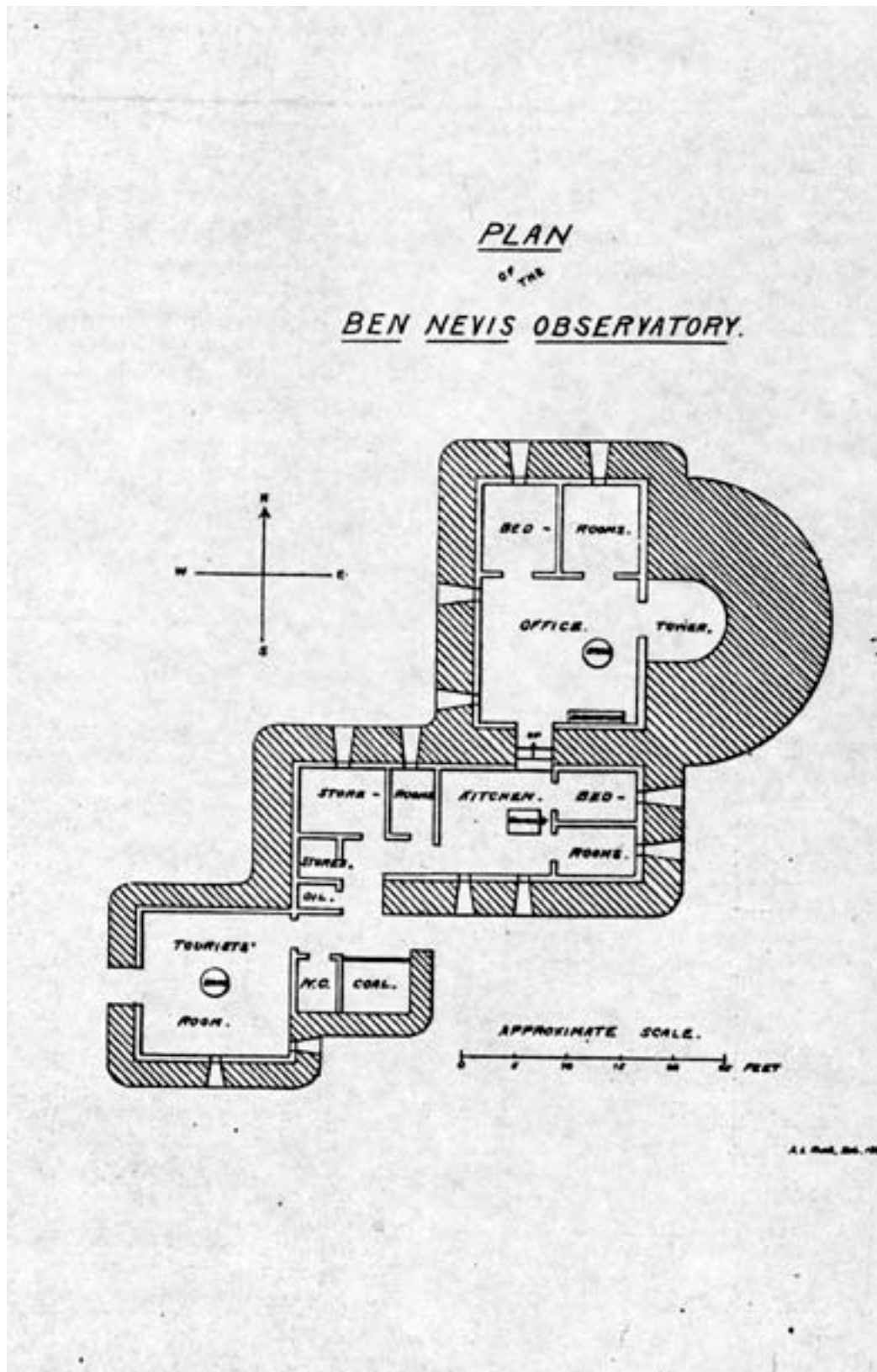
Ponies outside the observatory



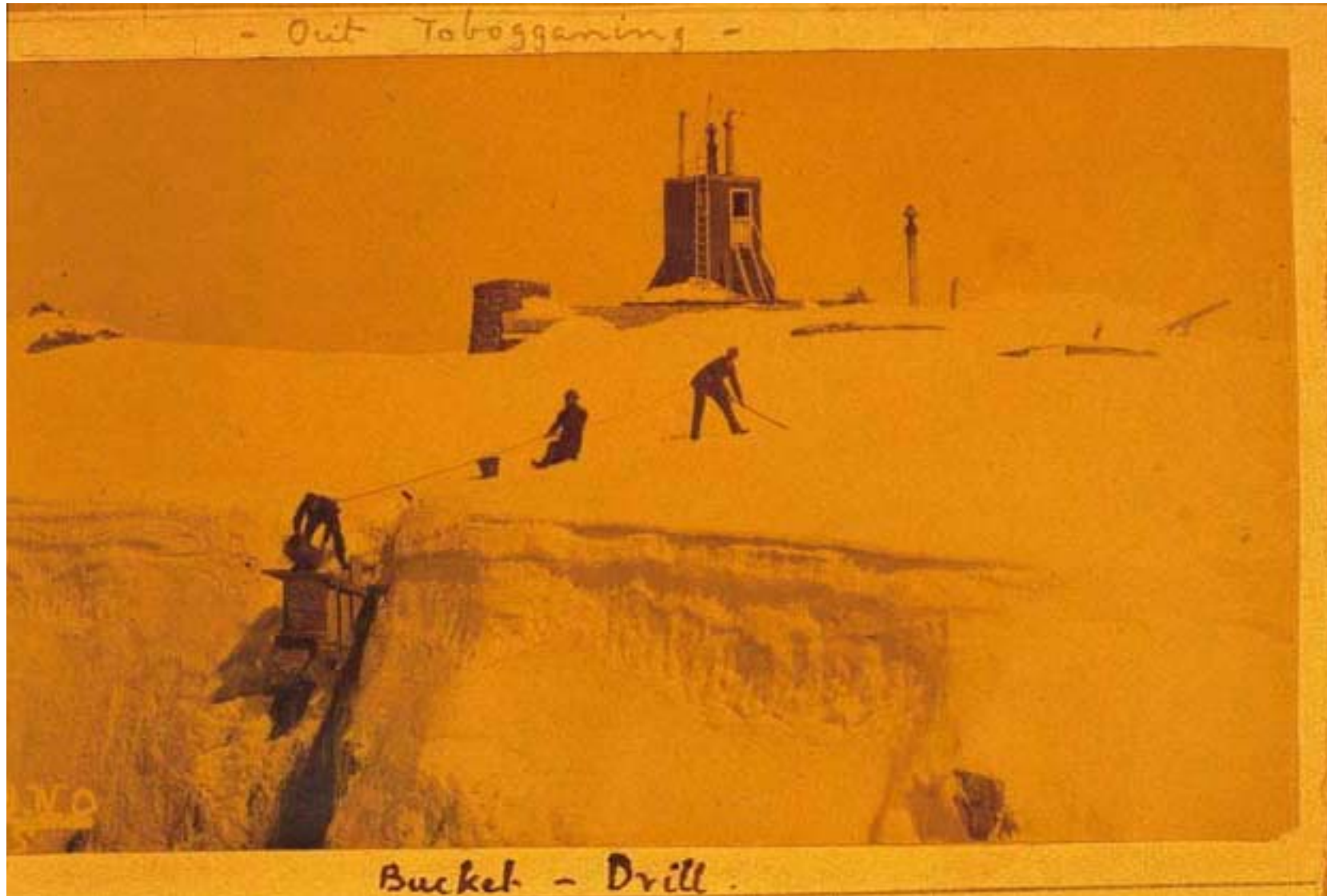
Observatory with heavy icing



Inside the observatory



Plan of the observatory



Rubbish disposal



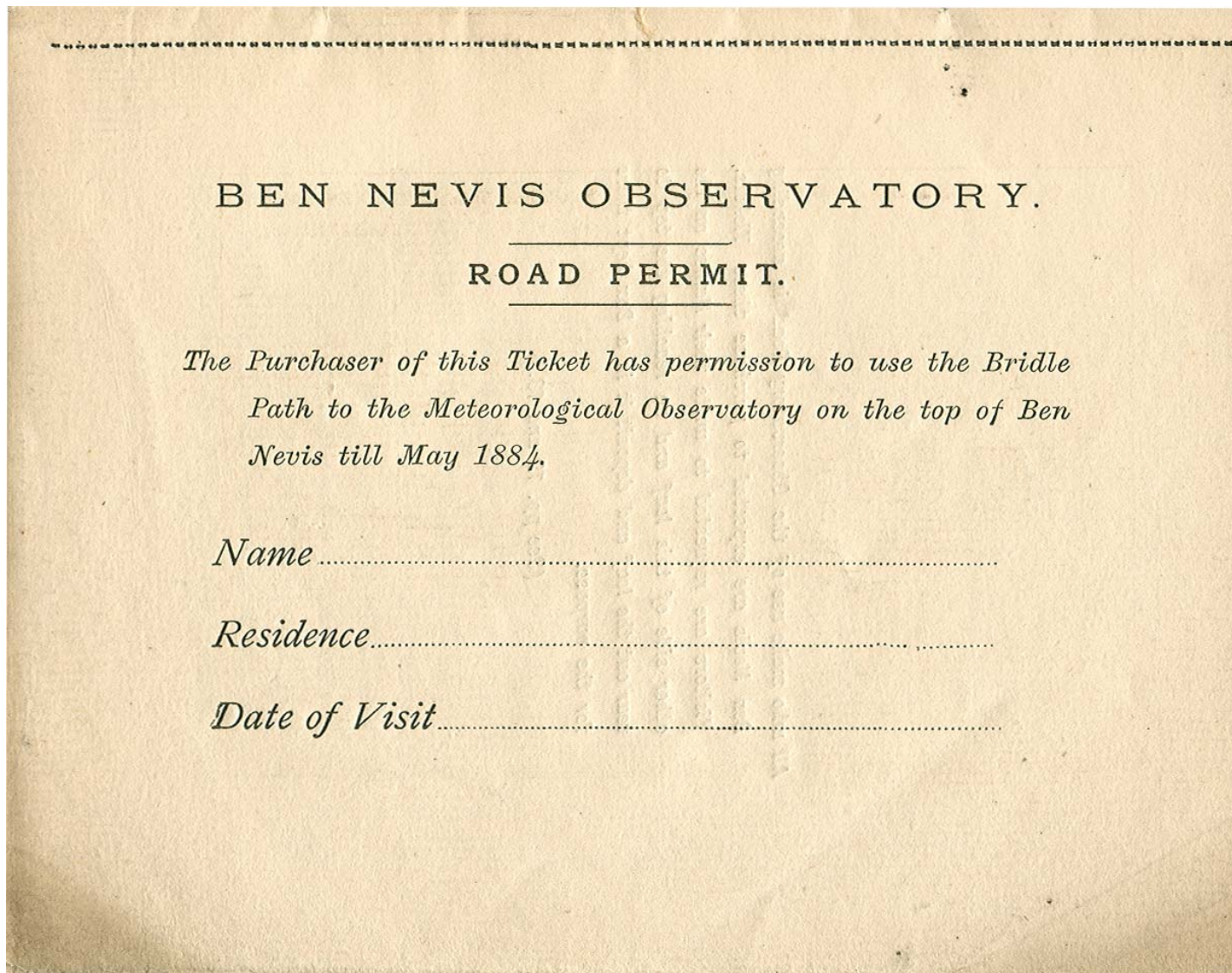
Clement Wragge



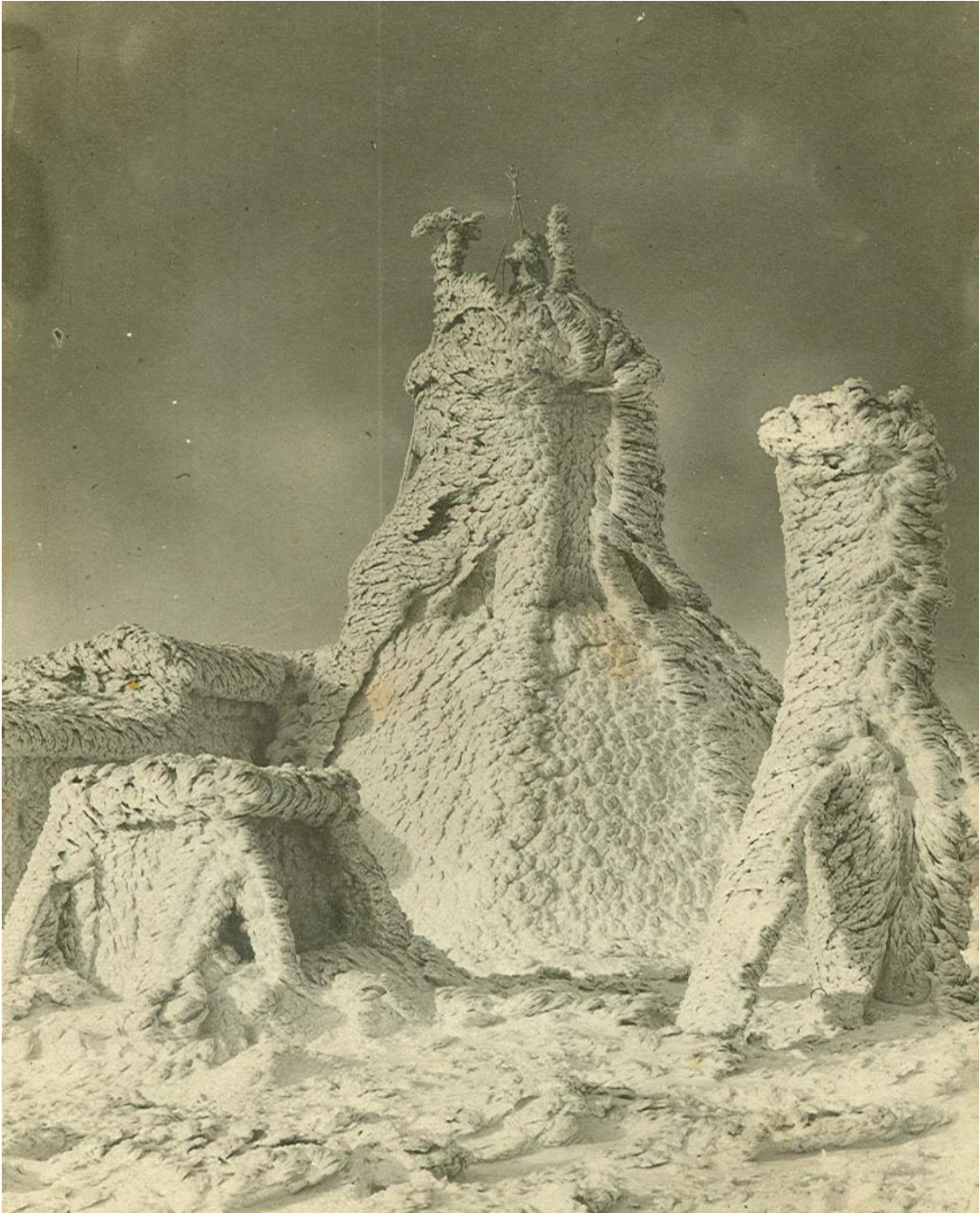
Inversion with cloud below (1)



Inversion with cloud below (2)



Ben Nevis road permit



Iced-up observatory

Ben Nevis and Fort William average rainfall

<i>Ben Nevis Observatory average monthly rainfall 1885–1903</i>	
<i>Month</i>	<i>Rainfall in millimetres</i>
Jan	465
Feb	344
Mar	386
Apr	215
May	201
Jun	191
Jul	274
Aug	339
Sep	400
Oct	392
Nov	390
Dec	484

<i>Fort William Observatory average monthly rainfall 1891–1903</i>	
<i>Month</i>	<i>Rainfall in millimetres</i>
Jan	221
Feb	175
Mar	178
Apr	101
May	088
Jun	088
Jul	118
Aug	175
Sep	208
Oct	201
Nov	191
Dec	287

Ben Nevis and Fort William average temperatures

<i>Ben Nevis Observatory average monthly temperatures in degrees C 1884–1903</i>		
<i>Month</i>	<i>Average daily maximum</i>	<i>Average daily minimum</i>
Jan	-2.5	-6.3
Feb	-2.8	-6.4
Mar	-2.6	-6.3
Apr	-0.5	-4.3
May	+2.6	-1.6
Jun	+6.5	+2.2
Jul	+7.1	+3.1
Aug	+6.4	+2.8
Sep	+5.3	+1.4
Oct	+1.4	-2.1
Nov	+0.1	-3.5
Dec	-2.0	-5.5

<i>Fort William Observatory average monthly temperatures in degrees C 1891–1903</i>		
<i>Month</i>	<i>Average daily maximum</i>	<i>Average daily minimum</i>
Jan	+5.9	+1.4
Feb	+6.2	+1.2
Mar	+7.6	+1.9
Apr	+11.0	+3.7
May	+14.0	+5.9
Jun	+17.2	+9.2
Jul	+17.7	+10.8
Aug	+17.0	+10.6
Sep	+15.1	+8.7
Oct	+10.9	+5.3
Nov	+8.8	+4.2
Dec	+6.7	+2.2

Depth of snow in cm at mid-month at Ben Nevis Observatory

<i>Year</i>	<i>Oct</i>	<i>Nov</i>	<i>Dec</i>	<i>Jan</i>	<i>Feb</i>	<i>Mar</i>	<i>Apr</i>	<i>May</i>	<i>Jun</i>	<i>Jul</i>
1883/84	nil	102	203	203	267	289	267	305	140	nil
1884/85	nil	nil	84	145	310	310	343	340	221	18
1885/86	79	58	112	137	218	234	310	234	160	nil
1886/87	nil	nil	33	117	99	118	124	129	nil	nil
1887/88	nil	nil	117	117	132	142	155	163	58	nil
1888/89	nil	nil	18	84	118	127	129	nil	nil	nil
1889/90	nil	nil	28	61	168	175	223	178	nil	nil
1890/91	18	56	23	25	97	112	142	91	nil	nil
1891/92	nil	nil	104	132	173	178	145	132	nil	nil
1892/93	58	20	69	66	137	157	140	nil	nil	nil
1893/94	8	53	69	127	239	317	239	244	180	nil
1894/95	nil	89	46	66	84	109	135	15	nil	nil
1895/96	nil	33	84	86	102	132	173	86	nil	nil
1896/97	nil	25	38	84	94	89	127	196	nil	nil
1897/98	nil	nil	61	99	132	178	185	196	56	nil
1898/99	nil	nil	nil	69	127	140	152	119	nil	nil
1899/00	nil	nil	nil	76	145	147	226	142	nil	nil
1900/01	41	48	30	84	112	147	221	129	nil	nil
1901/02	nil	nil	48	102	109	122	150	137	36	nil
1902/03	nil	nil	23	91	109	178	287	307	102	nil